

# Nebraska Head Start Association

NE Young Child Institute  
Deb Ross

---

---

---

---

---

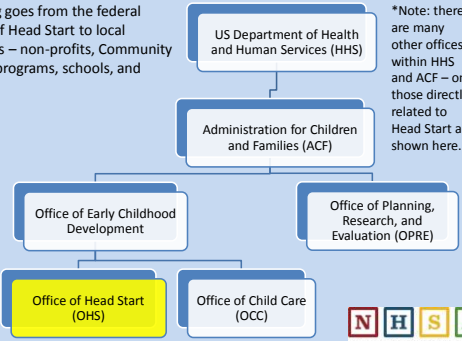
---

---

---

## Background on Head Start

Funding goes from the federal Office of Head Start to local grantees – non-profits, Community Action programs, schools, and more...



\*Note: there are many other offices within HHS and ACF – only those directly related to Head Start are shown here.



---

---

---

---

---

---

---

---

## Background on Head Start

- Head Start was launched in 1965 as a summer program for vulnerable children about to enter school. It quickly became a school-year program.
- In 1994 Early Head Start was created to serve infants and toddlers, as well as pregnant women.
- Both programs have always had a focus on supporting both children’s health, learning, and development and the comprehensive needs of their families including health, nutrition assistance, education, workforce training, and more.
- Over the past 50 years, Head Start has served more than 32,000,000 children.

---

---

---

---

---

---

---

---

## Background on Head Start

In 2013-2014 over 1,600 Head Start and Early Head Start programs served:

- 865,000+ 3- and 4-year-olds
- 155,000+ infants, toddlers, and pregnant women
- Families living below the federal poverty line, receiving public assistance, caring for a foster child, or experiencing homelessness
- Diverse communities
  - 38% of children identified as Hispanic or Latino when asked about ethnicity
  - 29% identified as Black and 43% as White when asked about race
  - 25% of children speak Spanish as their primary language and 70% English

---

---

---

---

---

---

---

---

## Head Start Early Learning Outcomes Framework: Birth to Five

	CENTRAL DOMAINS				
	APPROACHES TO LEARNING	SOCIAL AND EMOTIONAL DEVELOPMENT	LANGUAGE AND LITERACY	COGNITION	PERCEPTUAL, MOTOR, AND PHYSICAL DEVELOPMENT
▲ INFANT/TODDLER DOMAINS	Approaches to Learning	Social and Emotional Development	Language and Communication	Cognition	Perceptual, Motor, and Physical Development
● PRESCHOOLER DOMAINS	Approaches to Learning	Social and Emotional Development	Language and Communication Literacy	Mathematics Development Scientific Reasoning	Perceptual, Motor, and Physical Development

---

---

---

---

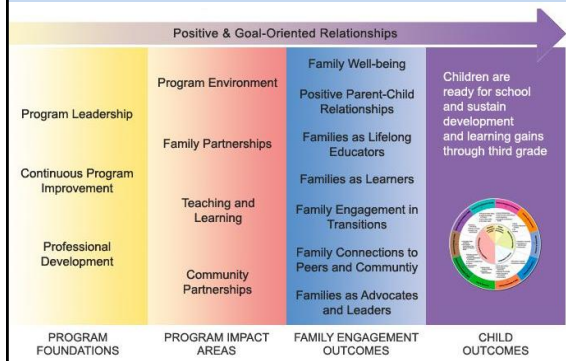
---

---

---

---

## Head Start's Parent, Family, and Community Engagement Framework:




---

---

---

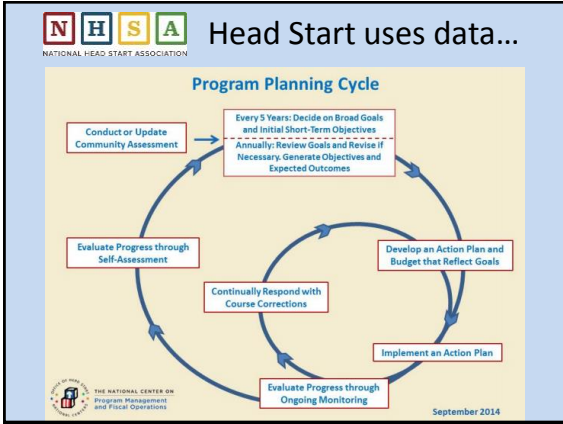
---

---

---

---

---




---

---

---

---

---

---

---

---

**LOW-INCOME FAMILIES AND CHILDREN NEED HEAD START**

To qualify for Head Start, families must fall below federal poverty guide lines. For 2016-2017 this an annual salary of \$24,250 gross per year for a family of four.

— that's less than minimum wage for two full time wage earners.

Without Head Start low-income children and their families would miss out on comprehensive services and be at greater risk for academic and social difficulties later in life.

---

---

---

---

---

---

---

---

**Children & Families in Nebraska**

28% of Nebraska's children are under 4 years old

22% of Children are living in households that were food insecure

31% of low income working families have children under age 6

3% of low income non-working families have children under age 6

16% of children ages 0-5 are living in poverty (100 percent of federal poverty level)

7% of children are living in extreme poverty (50 percent of federal poverty level)

22% of children live in a home where their parents lack secure employment

Information gathered from: [datacenter.kidcount.org](#) | [http://www.ksre.com/page/child-facts.html](#)

---

---

---

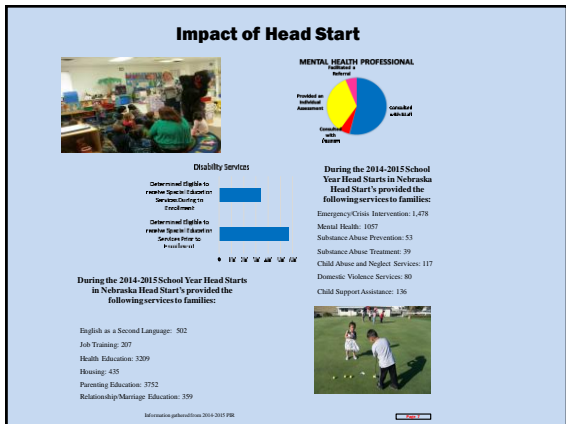
---

---

---

---

---




---

---

---

---

---

---

---

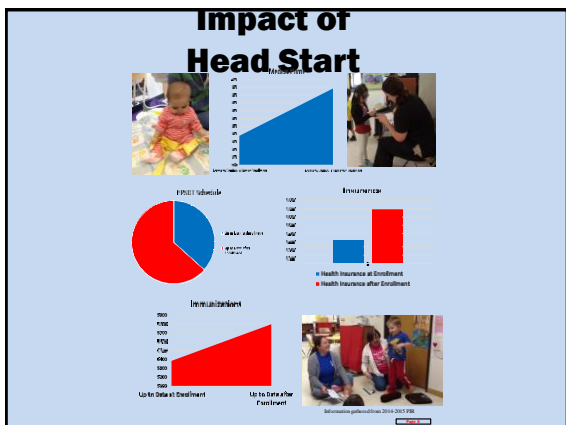
---

---

---

---

---




---

---

---

---

---

---

---

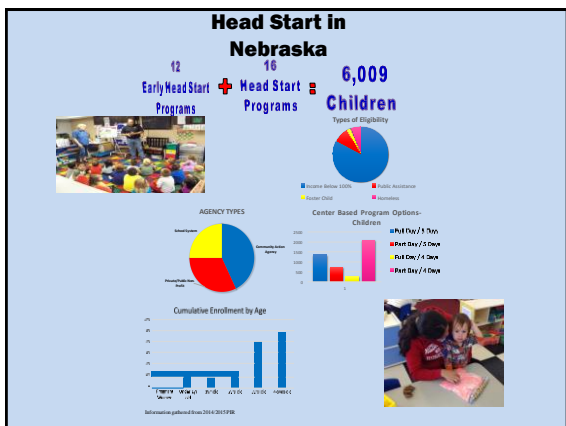
---

---

---

---

---




---

---

---

---

---

---

---

---

---

---

---

---

